

SOLIDSTYLE®

Stylish and hardwearing solid core wall panels and tiles



 boniplus.

Transform your home with **SolidStyle**® wall panels and tiles

Sun Stone Tile / SCP3001200 - SUN

SOLIDSTYLE®

Make a **solid** impression

Designed to provide an effortless alternative to traditional tiling, **SolidStyle**® wall panels and tiles offer an aesthetically pleasing and easy-to-install solution to decorating your home.

Crafted from solid core materials that promise durability and provide 100% water resistance, this range is also ideal for wet environments like bathrooms and shower areas.

Available in a range of modern designs, no matter your interior styling preferences, **SolidStyle**® has got you covered.

Contents



SolidStyle® Wall Panels



SolidStyle® Wall Tiles



For more information visit
www.boniplas.co.uk

Please note: Due to the limitations of the printing process colours may vary from those shown in this brochure.

SOLIDSTYLE®

Smart design, Solid performance

Requiring little maintenance and easy DIY installation with handy tongue and groove edges, **SolidStyle®** is the perfect solution if you're looking to transform your home quickly and efficiently.

Solid Core

Solidstyle® panels and tiles have an 8mm thick Grey Carbon Wood Polymer core that is high in density giving our panels a durable structure that will resist the knocks and bumps of everyday life.

Tongue and groove

Tongue and groove edging make installation easy whilst ensuring the panels and tiles are 100% watertight. **Solidstyle®** tiles have 4 sided tongue and groove whilst our panels are 2 sided.



10 year domestic guarantee

All **Solidstyle®** wall panels and tiles feature a 10 year domestic guarantee for complete peace of mind.

Protective coating

Solidstyle® panels and tiles have a coating that protects the surface from damage and UV radiation ensuring the finish will endure overtime. It also allows the panels to be easily cleaned.

Printed film

High quality designs are created by advanced film printing technology which can accurately reproduce textures such as stone, concrete or marble.

Why SolidStyle®



Fireproof



100% Waterproof



Easy to install



Eco-Friendly



Formaldehyde Free



No Heavy Metal



10 Year Guarantee



Suitable for any room in the home*

Lunar Stone Tile / SCP3001200 - LUNAR

* Not suitable for exterior use

Versatile panels
As well as being 100% waterproof **Solidstyle®** wall panels can be installed horizontally.

Dunfermline / SCP6002400-D

Perth / SCP6002400-P

Concrete Beige / SCP6002400-CB

SolidStyle® wall panel collection

Panel size / 600 x 2400 x 8mm

The stylish way to transform your walls

Unique and inspiring, **SolidStyle®** Wall Panels are 100% waterproof making them ideal for use on bathroom and kitchen walls and could not be easier to install and maintain. The tongue and groove edges slot together easily and can be installed over existing surfaces, requiring very little preparation.

SolidStyle® Wall Panels can be used in any room in the home and come with a 10 year domestic guarantee for complete peace of mind.

10 YEAR Domestic Guarantee

Realistic finishes

Choose from a selection of 4 textured or 4 smooth designs including marble, concrete or stone finishes.

SolidStyle® wall panel collection

Panel size / 600 x 2400 x 8mm

Textured finishes

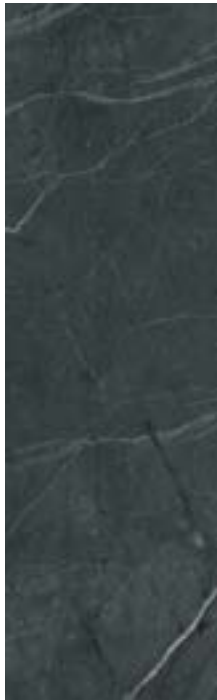


Concrete Grey
SCP6002400-CG

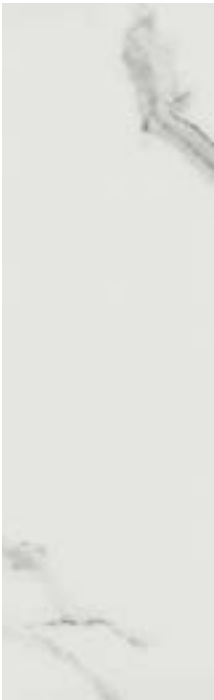


Concrete Beige
SCP6002400-CB

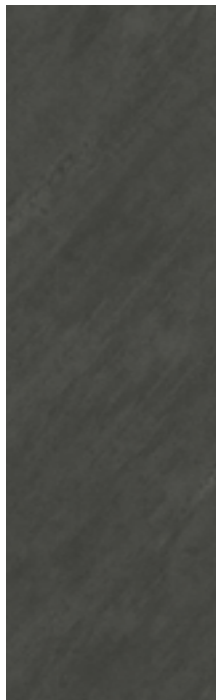
Smooth finishes



Dunfermline
SCP6002400-D



Carrera
SCP6002400-C



Stone Carbon
SCP6002400-SC



Stone Grey
SCP6002400-SG



Sterling
SCP6002400-S



Perth
SCP6002400-P

Easy and fast installation
If you're planning a bathroom project you save the time and disruption that comes with tiling. Solidstyle® wall panels can be installed mess free in a matter of hours.

EASY FIT
2 sided tongue and groove

10 YEAR
Domestic Guarantee

Concrete Grey / SCP6002400-CG

100% waterproof

Perfect for transforming
your bathroom.



Earth Stone / SCP3001200 - EARTH



Lunar Stone / SCP3001200 - LUNAR



Astro Stone / SCP3001200 - ASTRO

SolidStyle® wall tile collection

Panel size / 300 x 1200 x 8mm

Create the look you want with 100% waterproof wall tiles

SolidStyle® wall tiles are high pressure laminate bonded to a 100% waterproof core. With a range of contemporary designs you can achieve whatever look you want in any room in your home including the bathroom.

Our stone inspired tiles offer a choice of 6 textured and 2 smooth designs all of which carry our 10 year domestic guarantee for complete peace of mind.

10 YEAR
Domestic
Guarantee

Add some style
to your walls

Create a stylish tile effect
on your walls without the
need for grout.

Choose from a selection
of 6 textured or 2 smooth
designs including marble,
and stone finishes.

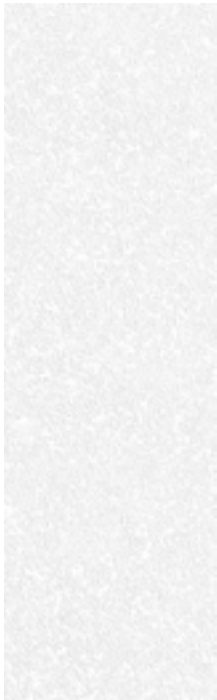
SolidStyle® wall tile collection

Panel size / 300 x 1200 x 8mm

Textured finishes



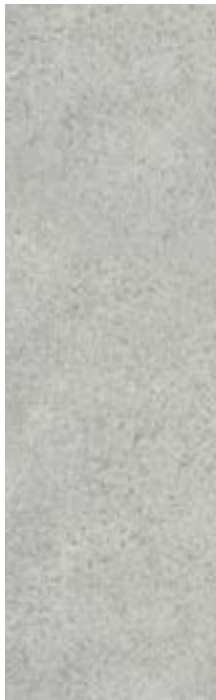
Astro Stone
SCP3001200 - ASTRO



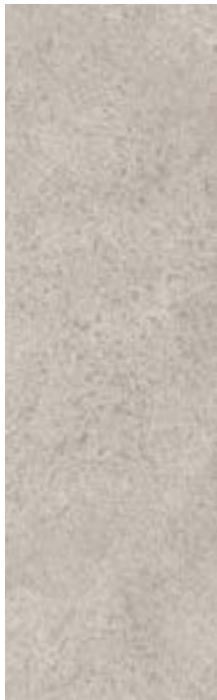
Orion Stone
SCP3001200 - ORION



Lunar Stone
SCP3001200 - LUNAR



Stella Stone
SCP3001200 - STELLA



Sun Stone
SCP3001200 - SUN



Earth Stone
SCP3001200 - EARTH

Smooth finishes



Saturn Stone
SCP3001200 - SATURN



Mercury Stone
SCP3001200 - MERCURY

Easy and fast
installation

If you're planning a
bathroom project
you save the time
and disruption that
comes with tiling.
Solidstyle® wall
tiles can be installed
mess free in a
matter of hours.

EASY FIT
4 sided
tongue and
groove

10 YEAR
Domestic
Guarantee

Saturn Stone / SCP3001200 - Saturn



Concrete Grey Panel / SCP6002400-CG



Orion Stone Tile / SCP3001200 - ORION



Sterling Panel / SCP6002400-S

SolidStyle® / Performance data sheet

	Feature	Norm	Test Result	Unit
	Low weight Facilitates transport and mounting		0.789 / m ²	kg/m ²
	Optimal format It gives the possibility of lining the entire height of the wall without the need for joining		Tile 300 x 1200 x 8mm Panel 600 x 2400 x 8mm	mm
	100% water proof Can also be used in the shower			
	Impact resistance (Shore hardness)		64HD	j
	Incombustibility		B1	class
	Sound insulation Comparable to drywall			
	Thermal resistance	EN15102: 2007 + A1 : 2001	0.074m ²	k/w
	No heavy metal Lead and tin free			
	Recycled product 100% Recyclable			
	Certainty 10 Year guarantee on the product			
	A+ rating Does not emit harmful substances			



Orion Stone Wall Tile



www.boniplas.co.uk | info@boniplas.co.uk | +44 (0) 191 372 9029

Boniplas, Unit 2 North Point, Belmont Business Park, Durham DH1 1TN

